

# MONTHLY MEMBERSHIP PROGRESS REPORT

LOCATION REP OF SRI LANKA

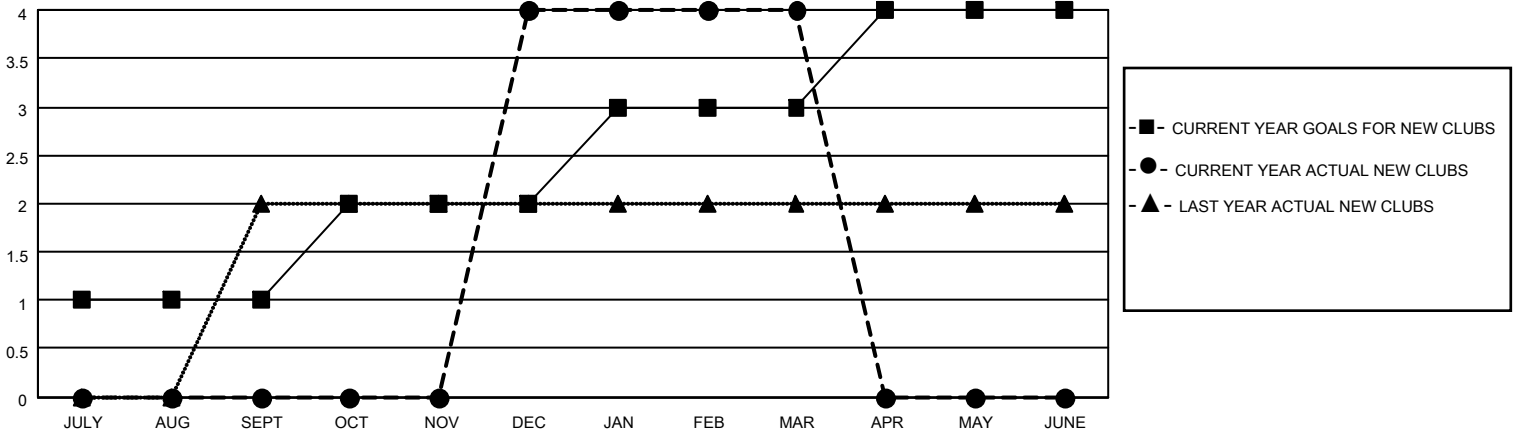
District 306 C2

Results as of: 3/31/2021

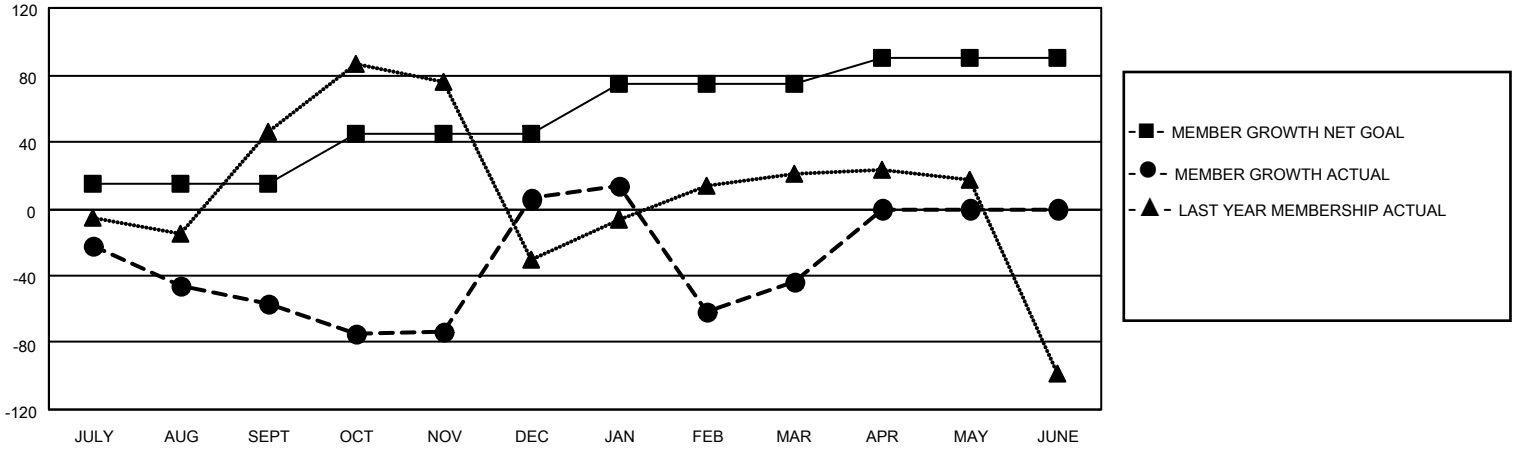
| Clubs                 |               |           |               |
|-----------------------|---------------|-----------|---------------|
| RESULTS FOR 2020-2021 |               |           |               |
| QUARTER               | NEW CLUB GOAL | NEW CLUBS | DROPPED CLUBS |
| JULY/AUG/SEPT         | 1             | 0         | 0             |
| OCT/NOV/DEC           | 1             | 4         | 0             |
| JAN/FEB/MAR           | 1             | 0         | 5             |
| APR/MAY/JUNE          | 1             | 0         | 0             |

| Members               |                        |                      |  |
|-----------------------|------------------------|----------------------|--|
| RESULTS FOR 2020-2021 |                        |                      |  |
| QUARTER               | MEMBER GROWTH NET GOAL | MEMBER GROWTH ACTUAL | DROPPED MEMBERS ACTUAL (including transfers) |
| JULY/AUG/SEPT         | 15                     | 52                   | 101  |
| OCT/NOV/DEC           | 30                     | 131                  | 67   |
| JAN/FEB/MAR           | 30                     | 51                   | 100  |
| APR/MAY/JUNE          | 15                     | 0                    | 0  |

**GOALS AND ACTUAL NEW CLUBS CUMULATIVE**



**GOALS AND ACTUAL MEMBERS CUMULATIVE**



|                        |            |
|------------------------|------------|
| DROPPED CLUBS: 5       |            |
| <u>DROPPED MEMBERS</u> |            |
| DECEASED               | 5          |
| CLUB CANCELLED         | 85         |
| OTHER                  | 178        |
| <b>TOTAL</b>           | <b>268</b> |

36 CLUBS OF 93 ADDED 1 OR MORE NEW MEMBERS

[CLICK HERE FOR CUMULATIVE MEMBERSHIP DATA](#)

| <u>GENDER DISTRIBUTION</u> |                |
|----------------------------|----------------|
| MALE                       | 1,685 (75.94%) |
| FEMALE                     | 534 (24.06%)   |

|                                 |     |
|---------------------------------|-----|
| TOTAL FAMILY UNIT MEMBERS       | 834 |
| FAMILY MEMBERS PAYING HALF DUES | 465 |